

Floor Plans...



Portland House provides excellent flexibility, capable of sub division, offering grade A office accommodation from 747.71 sq m (8,044 sq ft) up to a total of 2,482.27 sq m (26,719 sq ft) over two floors. The building layout allows for multiple occupancy, with access granted from the central reception and core area between the wings.

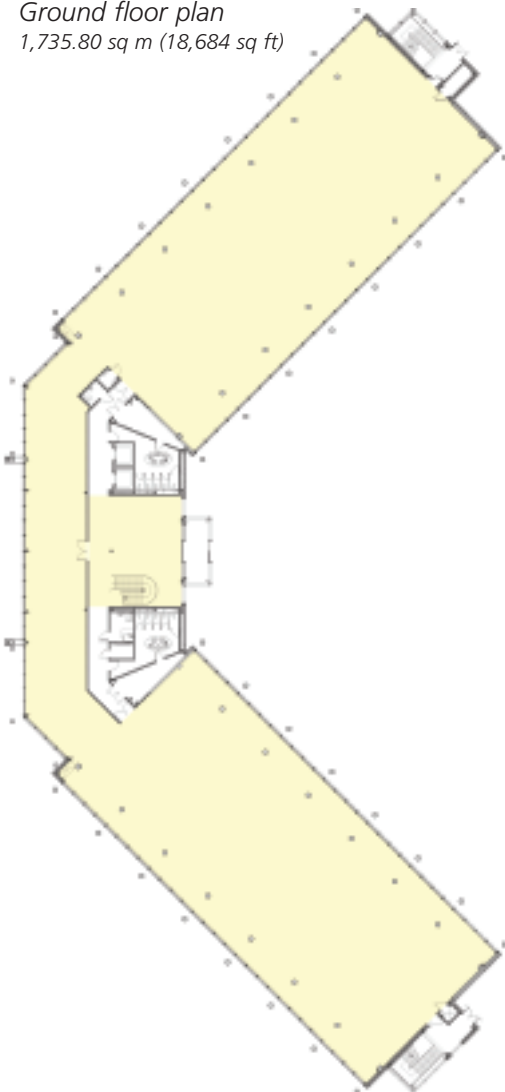
Each office area benefits from a high specification as detailed below:-

Portland House specification:-

- ❑ 'Very Good' BREEAM Rating
- ❑ Up flow ventilation system
- ❑ Raised access floors
- ❑ Suspended LG7 compliant lighting
- ❑ Floor to ceiling glazing
- ❑ 2 passenger lifts
- ❑ DDA compliant
- ❑ On site car parking
- ❑ On site bicycle storage
- ❑ Quality landscaped environment
- ❑ Planning / structural grid

Portland House Floor Plans

Ground floor plan
1,735.80 sq m (18,684 sq ft)



1st floor plan
746.47 sq m (8,035 sq ft)



